

## **Grease System Schematics (Auto Lube)**

### Section 04-02-02

Komatsu has made every effort to make this manual as accurate as possible based on the information available at the time of publication and printing. Continuous improvement and advancement of product design may cause changes to machines, which may not have been included in this publication. Komatsu reserves the right to make changes and improvements at any time. To ensure the most current information, please contact your service center.

For the newest version of these schematics, check the online Parts Manual database, or Komatsu Service Center.

Front Frame Auto Lube Hardware Group

Front Frame Auto Lube Hose Group

Rear Frame Auto Lube Hardware Group

Rear Frame Auto Lube Hose Group

Liftarm Auto Lube Hardware Group

Liftarm Auto Lube Hose Group

This Page Intentionally Left Blank

**Front Frame  
Auto Lube Hardware Group**



8

7

6

5

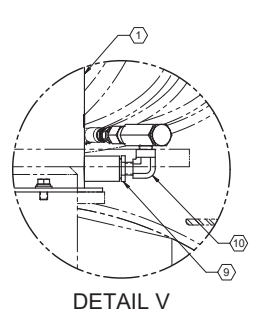
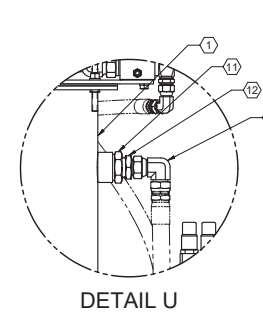
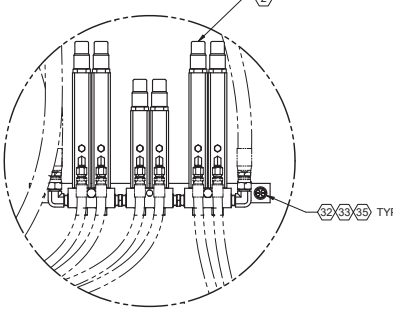
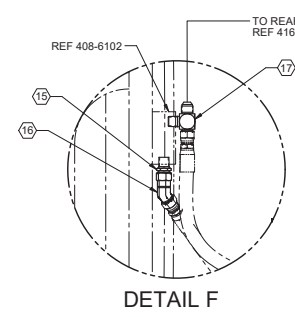
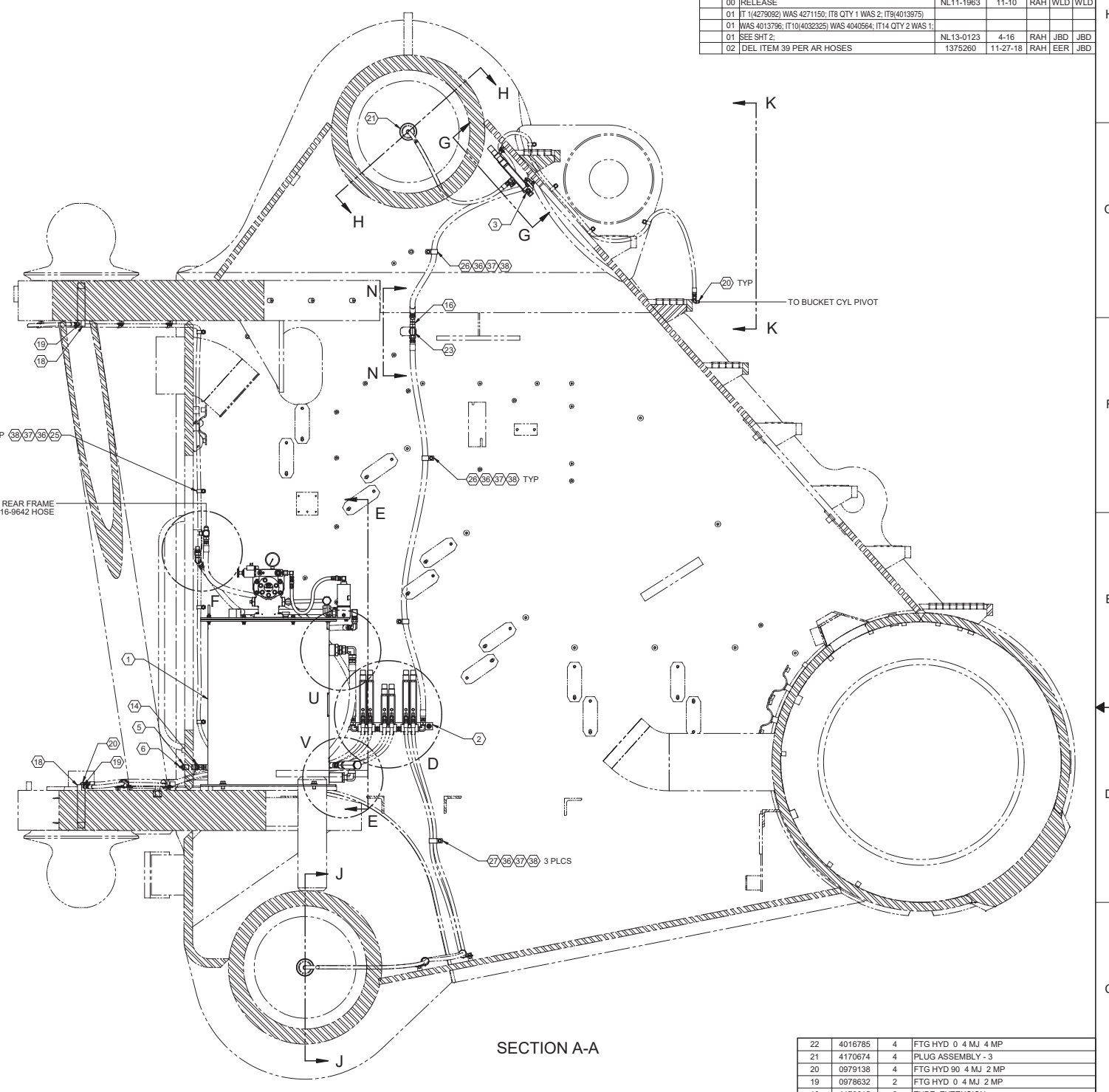
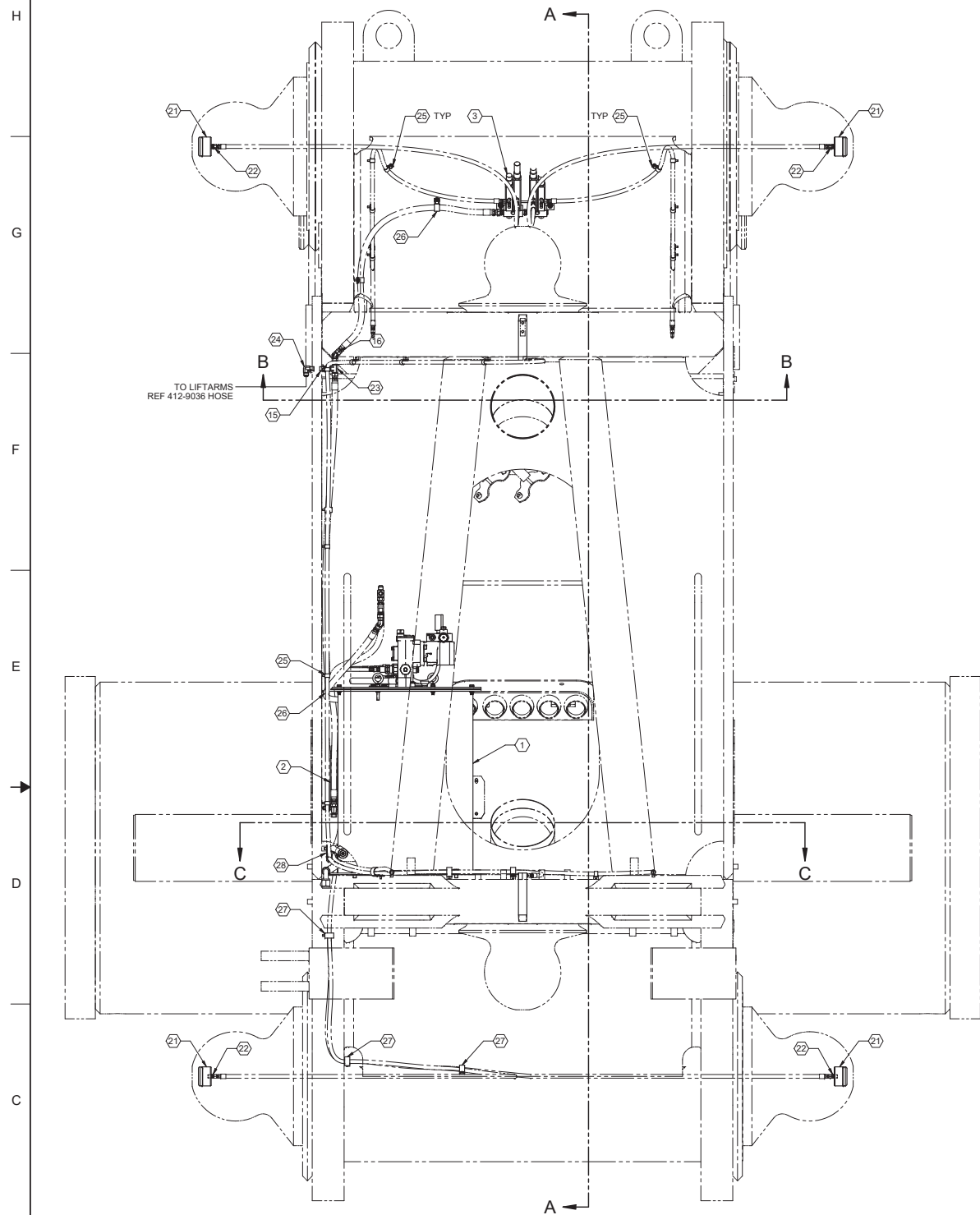
4

3

2

1

REVISIONS						
DATE	REV	DESCRIPTION	ENR	DATE	CHK	APP
	00	RELEASE	NL11-1963	11-10	RAH	WLD
	01	IT 1(4279092) WAS 4271150; IT8 QTY 1 WAS 2; IT9(4013975)				
	01	WAS 4013796; IT10(4032325) WAS 4040564; IT14 QTY 2 WAS 1;				
	01	SEE SHT 2;	NL13-0123	4-16	RAH	JBD
	02	DEL ITEM 39 PER AR HOSES	1375260	11-27-18	RAH	EER



SECTION A-A

ITEM	PART NO.	QTY	DESCRIPTION	ITEM	PART NO.	QTY	DESCRIPTION
22	4016785	4	FTG HYD 0 4 MJ 4 MP	22	4016785	4	FTG HYD 0 4 MJ 4 MP
21	4170674	4	PLUG ASSEMBLY - 3	21	4170674	4	PLUG ASSEMBLY - 3
20	0979138	4	FTG HYD 90 4 MJ 2 MP	20	0979138	4	FTG HYD 90 4 MJ 2 MP
19	0978632	2	FTG HYD 0 4 MJ 2 MP	19	0978632	2	FTG HYD 0 4 MJ 2 MP
18	4170615	2	TUBE, EXTENSION	18	4170615	2	TUBE, EXTENSION
17	4038894	1	FTG HYD TE 8 MJ 8 MJ 6 MP	17	4038894	1	FTG HYD TE 8 MJ 8 MJ 6 MP
16	4016199	2	45 DEG SWIVEL ELBOW	16	4016199	2	45 DEG SWIVEL ELBOW
15	4002420	2	FTG HYD 0 8 MJ 6 MP	15	4002420	2	FTG HYD 0 8 MJ 6 MP
14	4018666	2	FTG HYD 0 8 MJ 8 MP JUMP	14	4018666	2	FTG HYD 0 8 MJ 8 MP JUMP
13	4002481	1	FTG HYD 90 12 MJ 12 FJ SWVL	13	4002481	1	FTG HYD 90 12 MJ 12 FJ SWVL
12	4040561	1	FTG HYD 0 12 MJ 16 MP	12	4040561	1	FTG HYD 0 12 MJ 16 MP
11	4013799	1	PIPE BUSHING 1.250 1.000 6000	11	4013799	1	PIPE BUSHING 1.250 1.000 6000
10	4032325	1	PIPE HYD ST ELB 90 8 MP X 8 FP	10	4032325	1	PIPE HYD ST ELB 90 8 MP X 8 FP
9	4013795	1	PIPE BUSHING, RED 1 X 1/2	9	4013795	1	PIPE BUSHING, RED 1 X 1/2
8	4002479	1	HYD FITTING, 90-DEG 8 MJ 8 FJ	8	4002479	1	HYD FITTING, 90-DEG 8 MJ 8 FJ
7	4222474	1	FTG HYD 0 8MJ 8FP	7	4222474	1	FTG HYD 0 8MJ 8FP
6	0020315	1	GREASE FITTING 1/8 NPT	6	0020315	1	GREASE FITTING 1/8 NPT
5	4222475	1	PIPE RED .500 .125 BSH 6000	5	4222475	1	PIPE RED .500 .125 BSH 6000
4	4222441	1	FILTER LUBRICATOR #94004	4	4222441	1	FILTER LUBRICATOR #94004
3	4274728	1	ASSY UP INJ F FRM L13 - L23 G2	3	4274728	1	ASSY UP INJ F FRM L13 - L23 G2
2	4274727	1	ASSY LWIR INJ FRM L18L23 G2	2	4274727	1	ASSY LWIR INJ FRM L18L23 G2
1	4279092	1	ASSY GREASE RESERVOIR - PUMP	1	4279092	1	ASSY GREASE RESERVOIR - PUMP

THIS DRAWING AND ALL DATA THEREIN IS THE PROPERTY OF LETOURNEAU TECHNOLOGIES. IT IS CONFIDENTIAL AND MUST NOT BE COPIED, IT IS LOANED SUBJECT TO RETURN UPON DEMAND AND IS NOT TO BE USED IN ANY WAY DETRIMENTAL TO OUR INTEREST.

UNLESS OTHERWISE SPECIFIED:  
 • DIMENSIONS ARE IN INCHES & DECIMALS  
 • TOLERANCES ON: ANGLES ±1° FRACTIONS ±.015 XX DECIMAL ±.015 ENGR ±.015  
 • MACHINED CORNERS: R64 X .45  
 • WELD PROPERTIES SHALL MEET THE MINIMUM REQUIREMENTS OF THE BASE MATERIAL.

THIRD ANGLE PROJECTION

FIRST USED ON CONTRACT NO. 427-2702

LeTourneau Technologies™

GP HDW AUTOLUBE FF L2350 G2

SCALE: 1/8" = 1'-0" (SEE DET 452.7) SHEET 1 OF 2

DATE: 11-10-11  
 DWG: rhyatt  
 CHK: WLD  
 ENGR: WLD

PROJ APPROVAL: [Signature]

REF 427-4756 GP HOSES AUTOLUBE FF L2350 G2 FOR HOSE INSTALLATION  
 REF 426-7535 REF AUTO LUBE L23502201 & UP FOR SCHEMATIC

8 7 6 5 4 3 2 1

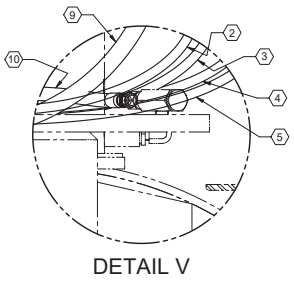
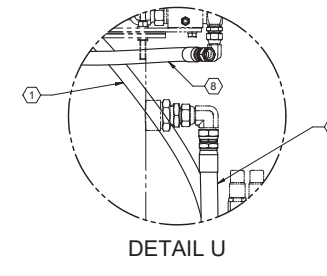
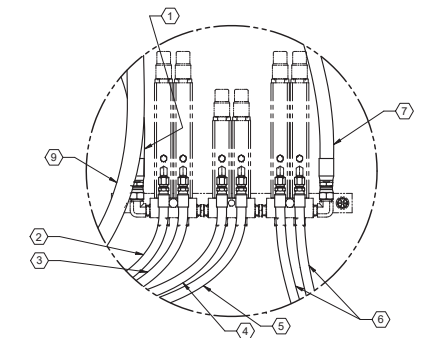
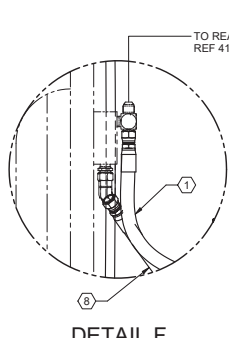
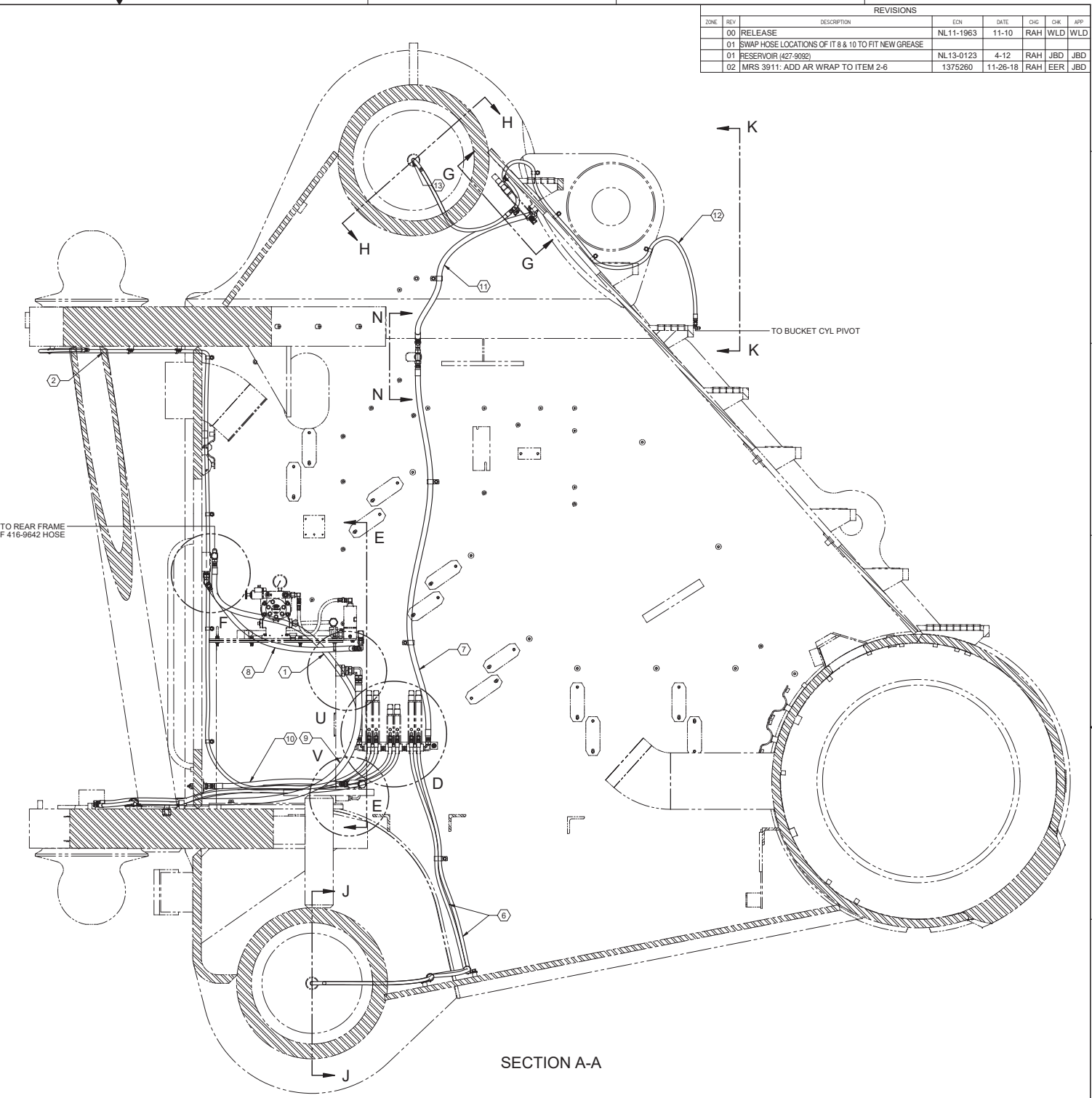
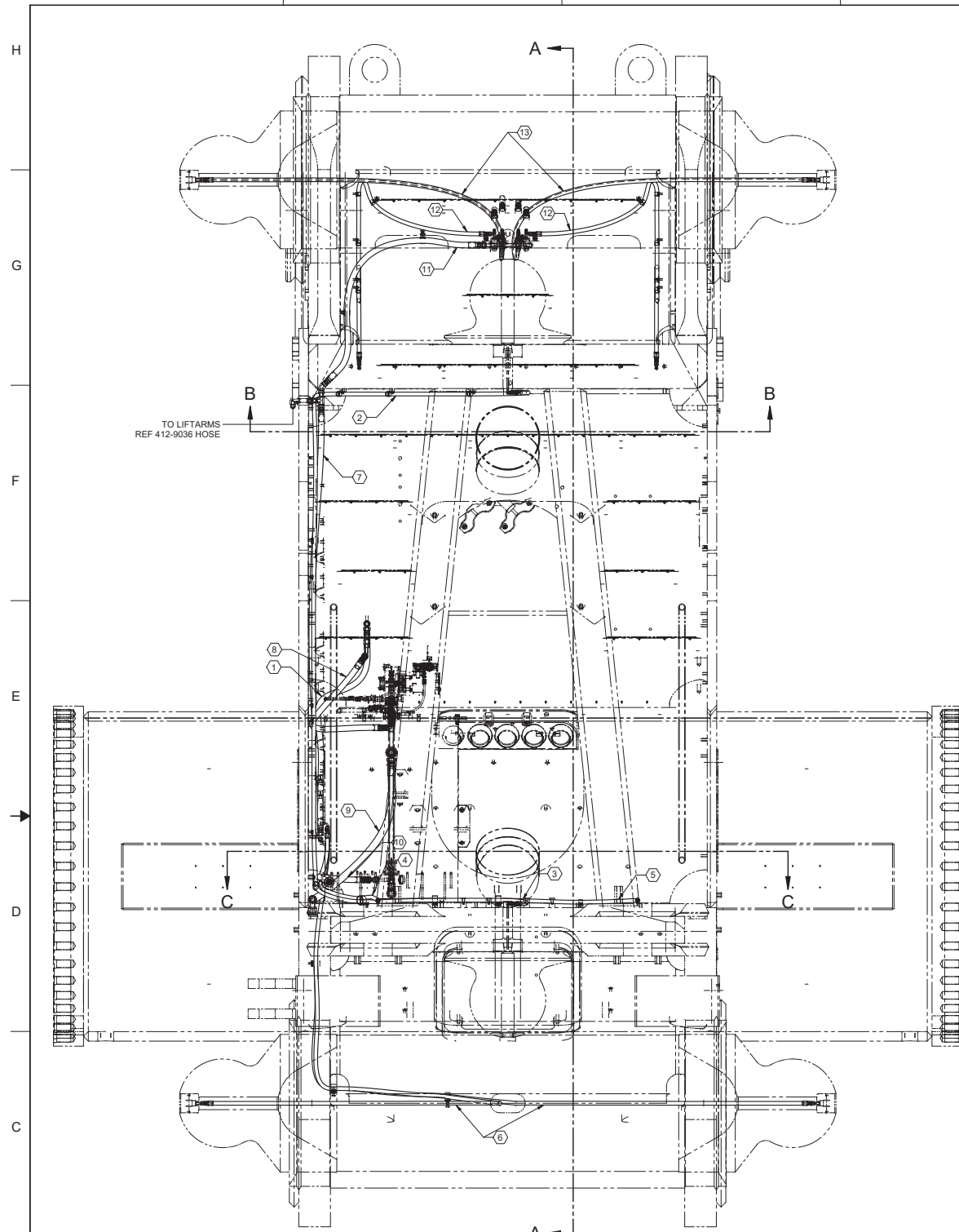
A B C D E F G H



**Front Frame  
Auto Lube Hose Group**



REV		DESCRIPTION	EN	DATE	CHK	CHK	APP
00	RELEASE		NL11-1963	11-10	RAH	WLD	WLD
01	SWAP HOSE LOCATIONS OF IT 8 & 10 TO FIT NEW GREASE		NL13-0123	4-12	RAH	JBD	JBD
01	RESERVOIR (427-9092)		1375260	11-26-18	RAH	EER	JBD
02	MRS 3911: ADD AR WRAP TO ITEM 2-6						



ITEM	PART NO.	QTY	DESCRIPTION
13	4122873	2	HOSE 5000 4 68.0 OJ OJ
12	4193532	2	HOSE 5000 4 85.0 OJ OJ
11	4150768	1	HOSE 4250 8 54.0 OJ OJ
10	4122863	1	HOSE 4250 8 33.0 OJ OJ
9	4222463	1	HOSE 1250 12 60.0 OJ 90J
8	4129012	1	HOSE 4250 8 36.0 OJ OJ
7	4129028	1	HOSE 4250 8 68.0 OJ OJ
6	4296445	2	HOSE 4000 4 130.0 OJ OJ AR
5	4296444	1	HOSE 4000 4 100.0 OJ OJ AR
4	4292499	1	HOSE 4000 4 70.0 OJ OJ AR
3	4292500	1	HOSE 4000 4 80.0 OJ OJ AR
2	4296443	1	HOSE 4000 4 154.0 OJ OJ AR
1	4129020	1	HOSE 4250 8 52.0 OJ OJ

REF 427-4757 GP HDW AUTOLUBE FF L2350 G2 FOR INJECTOR AND HARDWARE INSTALLATION  
 REF 426-7535 REF AUTO LUBE L23502201 & UP FOR SCHEMATIC

THIS DRAWING AND ALL DATA THEREIN IS THE PROPERTY OF LETOURNEAU TECHNOLOGIES. IT IS CONFIDENTIAL AND MUST NOT BE COPIED, IT IS LOANED SUBJECT TO RETURN UPON DEMAND AND IS NOT TO BE USED IN ANY WAY DETRIMENTAL TO OUR INTEREST.

UNLESS OTHERWISE SPECIFIED:  
 DIMENSIONS ARE IN INCHES & APPLY BEFORE PLATING OR FINISH COATINGS.  
 TOLERANCES ON: ANGLES ±1°  
 FRACTIONS ±0.10  
 XX DECIMAL ±0.03  
 XXX DECIMAL ±0.015  
 MACHINED CORNERS: R54 X .45  
 WELD PROPERTIES SHALL MEET THE MINIMUM REQUIREMENTS OF THE BASE MATERIAL.

THIRD ANGLE PROJECTION

FIRST USED ON CONTRACT NO. 427-2702

DRWN rhyatt 11-10-11  
 CHK WLD 11-10-11  
 ENGR WLD 11-10-11  
 PROD ENGR

PROJ APPROVAL

MATL

LeTourneau Technologies™

GP HOSES AUTOLUBE FF L2350 G2

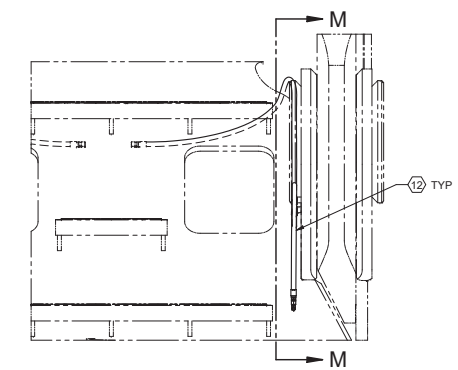
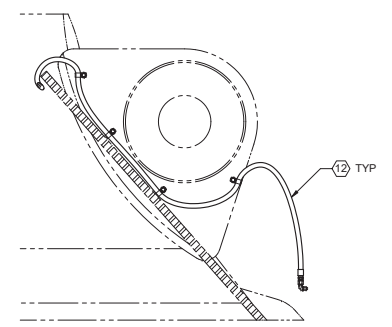
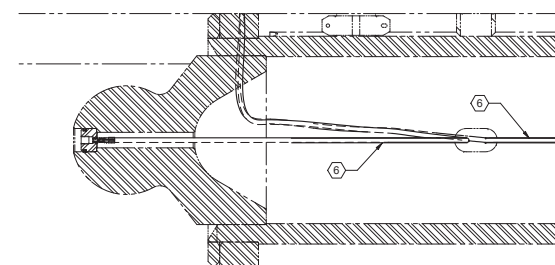
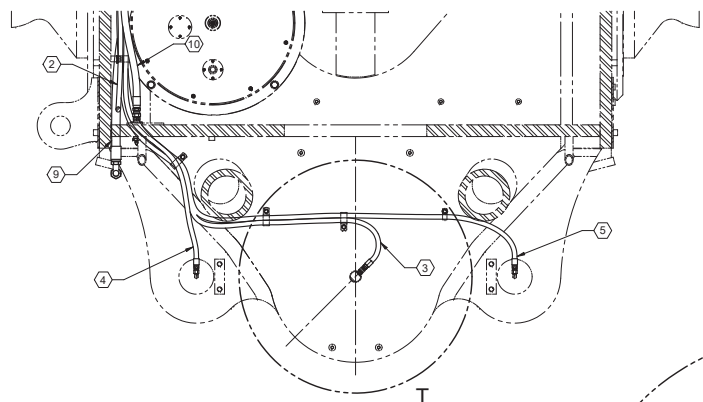
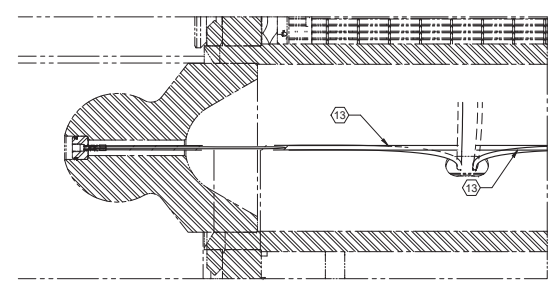
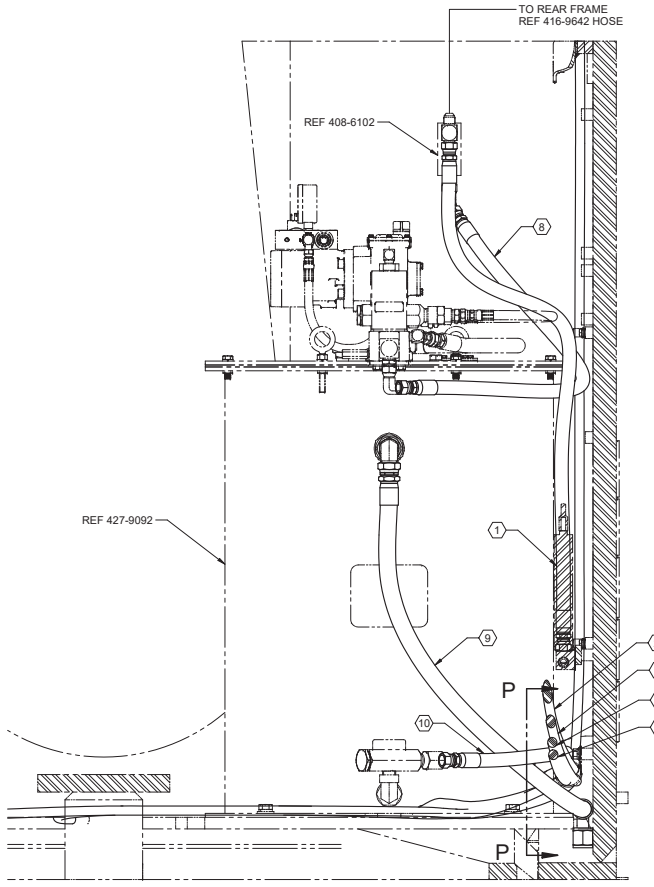
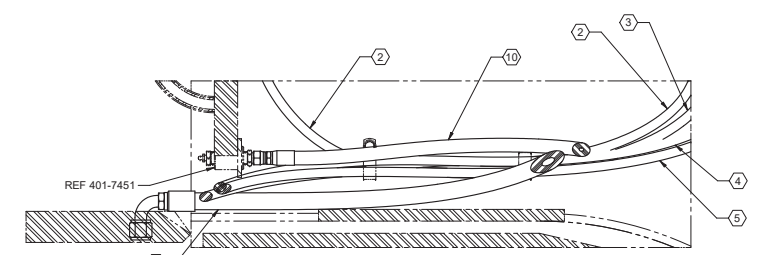
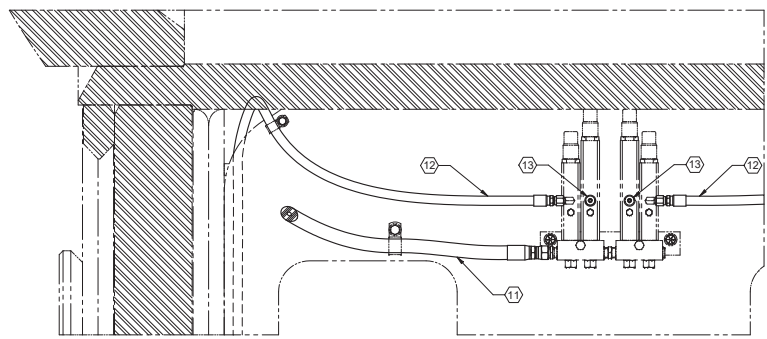
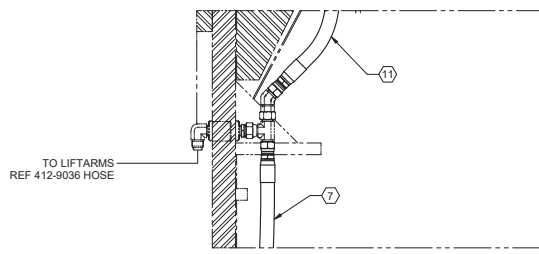
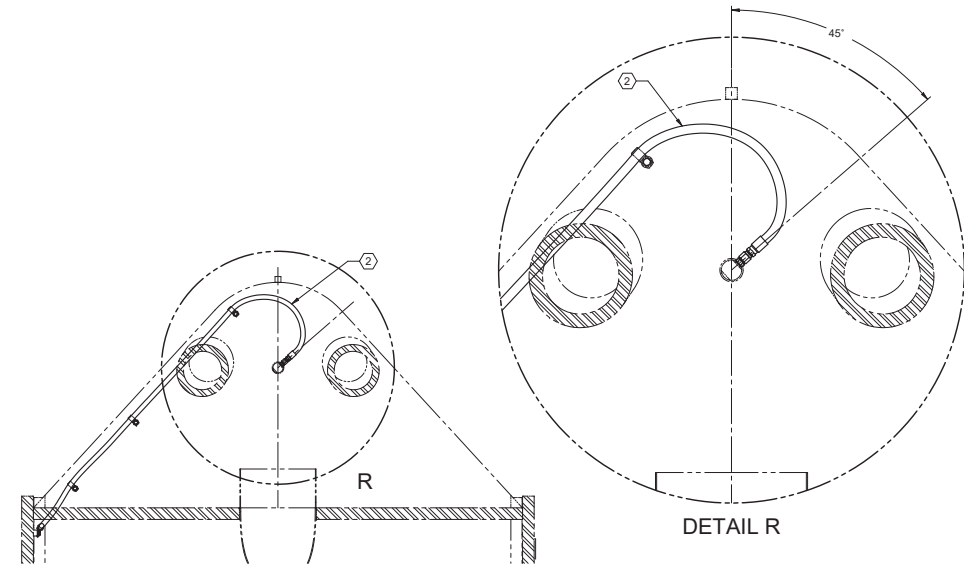
DO NOT SCALE

4274756

02

SCALE 1/8" = 1" (SEE DET 114.7) SHEET 1 OF 2

REVISIONS						
ZONE	REV	DESCRIPTION	EN	DATE	CHK	APP
	00	RELEASE	NL11-1963	11-10	RAH	WLD WLD
	01	SWAP HOSE LOCATIONS OF IT 8 & 10 TO FIT NEW GREASE	NL13-0123	4-12	RAH	JBD JBD
	01	RESERVOIR 427-9092	1375260	11-26-18	RAH	EER JBD
	02	SEE SHEET 1				



**Liftarm Auto Lube  
Hardware Group**



8

7

6

5

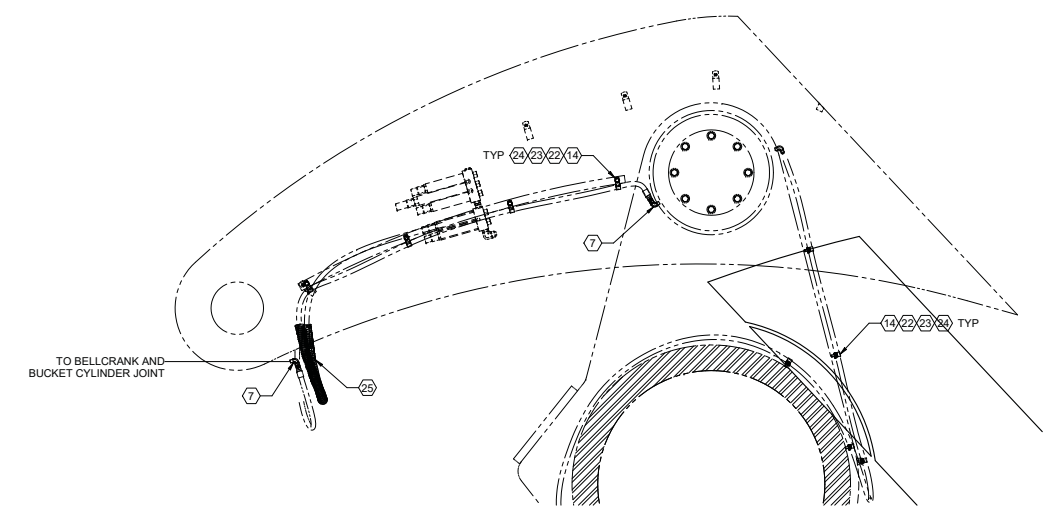
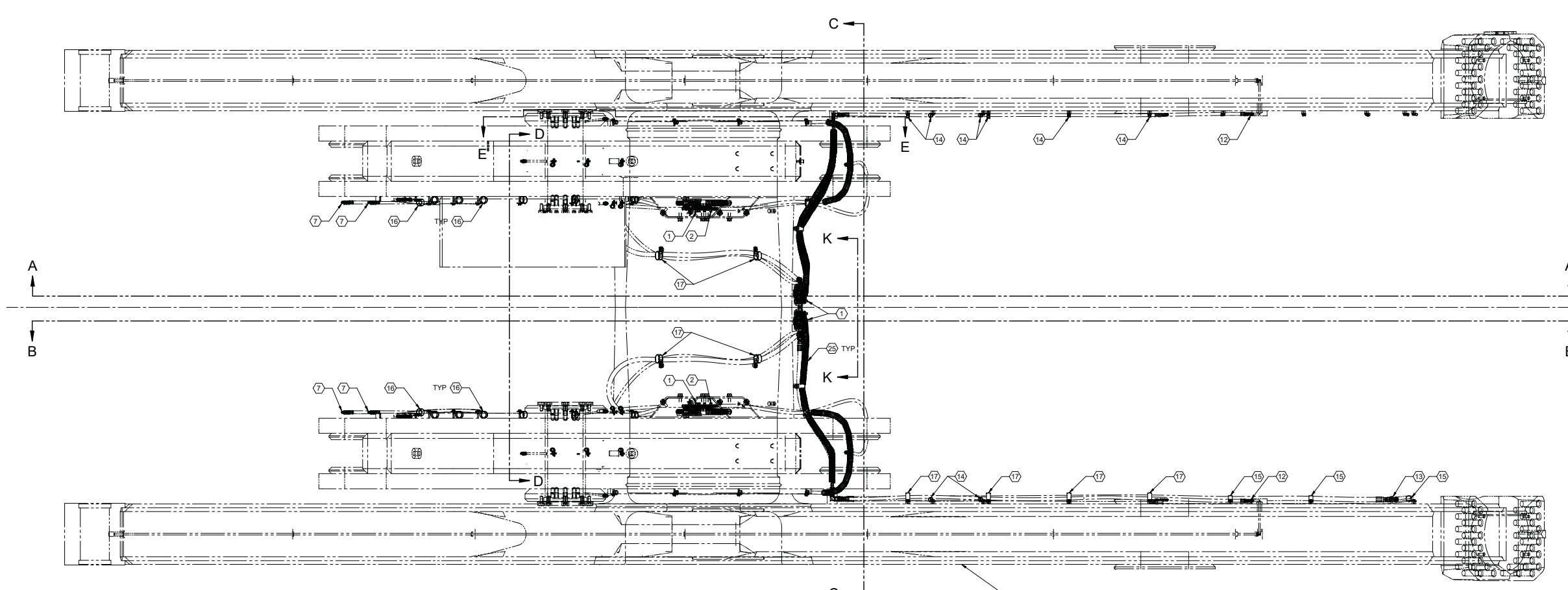
4

3

2

1

REV		DESCRIPTION	ENR	DATE	CHK	APP
00	RELEASE		NL11-1959	10-29	RAH	WLD



**SECTION E-E**  
TYP BOTH SIDES

ITEM	PART NO.	QTY	DESCRIPTION
25	4274740	1	HOSE GUARD SIZE 6 192.00
24	0812278	53	BOLT HEX .250 .63 NC G8 FT
23	0213584	53	WASHER LOCK SPR .25 .49 .06
22	4010923	53	WASHER FLAT 250 .63 .08
21	0788159	2	BOLT HX .375 .625 NC G8 FT
20	0829683	6	BOLT HX .375 1.750 NC G8
19	0753123	8	WASHER LOCK SPR .375 .68 .09
18	0808221	2	WASHER FLAT .375 .81 .08
17	0986145	9	CLAMP CABLE INSL 1.50 .406
16	0986144	17	CLAMP CABLE INSL 1.25 .406
15	0986143	3	CLAMP CABLE INSL 1.00 .406
14	4086112	26	CLAMP CABLE INSL .63 .40
13	4016701	1	FTG HYD 90 8 MJ 8 MJ BH
12	0978632	10	FTG HYD 0 4MJ 1/8MP
11	4018666	2	FTG HYD 0 8 MJ 8 MP JUMP
10	4016785	8	FTG HYD 0 4 MJ 4 MP
9	0088402	2	PIPE PLUG .375 CS HX
8	4078933	2	FTG HYD 90 4 MJ 2 MP 1.2 LG
7	0979138	28	FTG HYD 90 4 MJ 2 MP
6	4037689	4	GREASE FITTING ELBOW BODY
5	4002439	3	FTG HYD 90 8 MJ 6 MP
4	4038895	1	FTH HYD TE 8 MJ 6 MP 8 MJ
3	4032312	3	PIPE HYD NIP 6 MP 6 MP HX
2	4271145	2	2 UNIT INJECTOR SL-V
1	4270905	4	3 UNIT INJECTOR SL-V-SL-V-XL

**REF 427-4748 GP HOSES AUTOLUBE LA L18G2 HL FOR HOSE INSTALLATION**  
**REF 427-0840 REF AUTO LUBE L18502201&UP FOR SCHEMATIC**

THIS DRAWING AND ALL DATA THEREIN IS THE PROPERTY OF LETOURNEAU TECHNOLOGIES. IT IS CONFIDENTIAL AND MUST NOT BE COPIED, IT IS LOANED SUBJECT TO RETURN UPON DEMAND AND IS NOT TO BE USED IN ANY WAY DETRIMENTAL TO OUR INTEREST.

UNLESS OTHERWISE SPECIFIED:  
 DIMENSIONS ARE IN INCHES & APPLY BEFORE PLATING OR FINISH COATINGS.  
 TOLERANCES ON:  
 FRACTIONS: ±.015  
 ANGLES: ±1°  
 DECIMAL: ±.005  
 XXX DECIMAL: ±.015  
 MACHINED CORNERS: R54 X .45  
 WELD PROPERTIES SHALL MEET THE MINIMUM REQUIREMENTS OF THE BASE MATERIAL.

THIRD ANGLE PROJECTION

FIRST USED ON CONTRACT NO. 426-7757

DWN rhyatt 10-29-11  
 CHK WLD 10-29-11  
 ENGR WLD 10-29-11

PROJ APPROVAL

MATL

LeTourneau Technologies™

**GP HDW AUTOLUBE LA L18G2 HL**

DO NOT SCALE

4274749

100

1/00

SCALE 1/8 (SEE DET. 63.1 Ibm) SHEET 1 OF 3

8

7

6

5

4

3

2

1

8

7

6

5

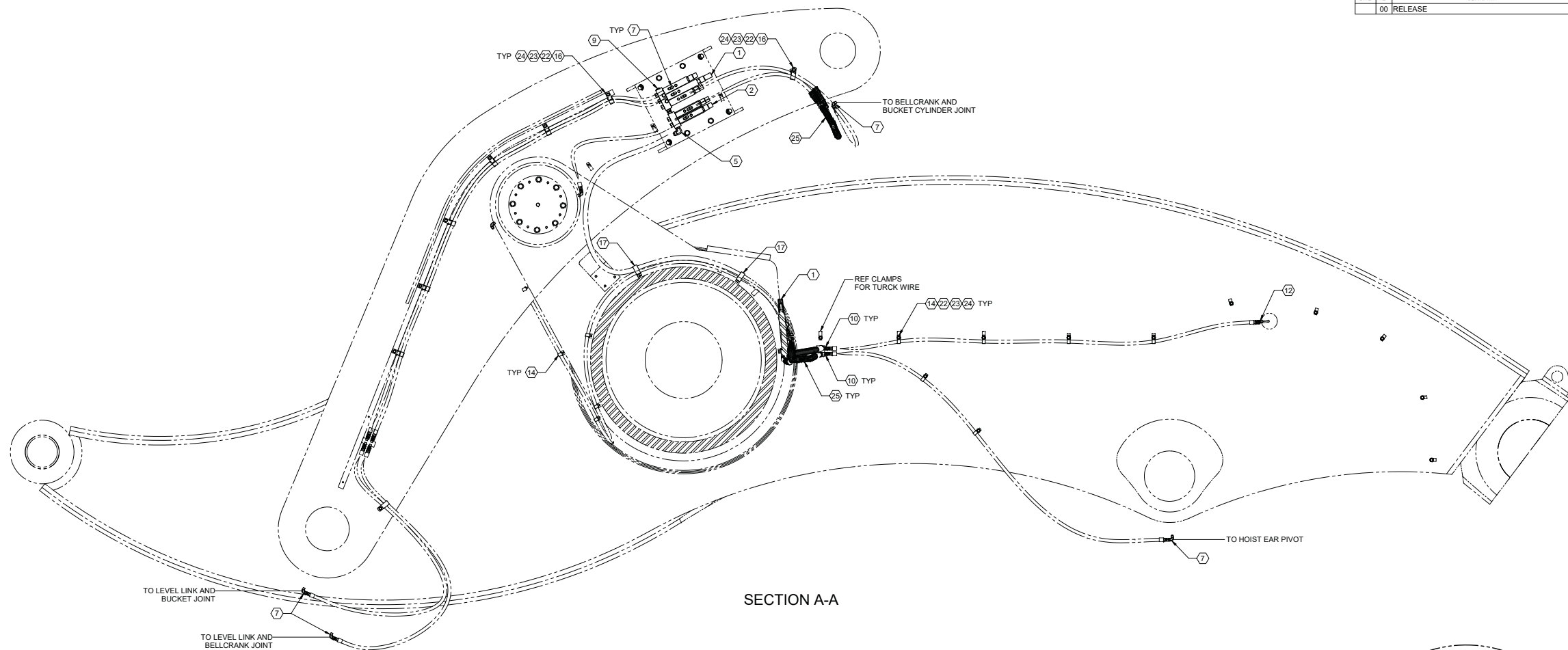
4

3

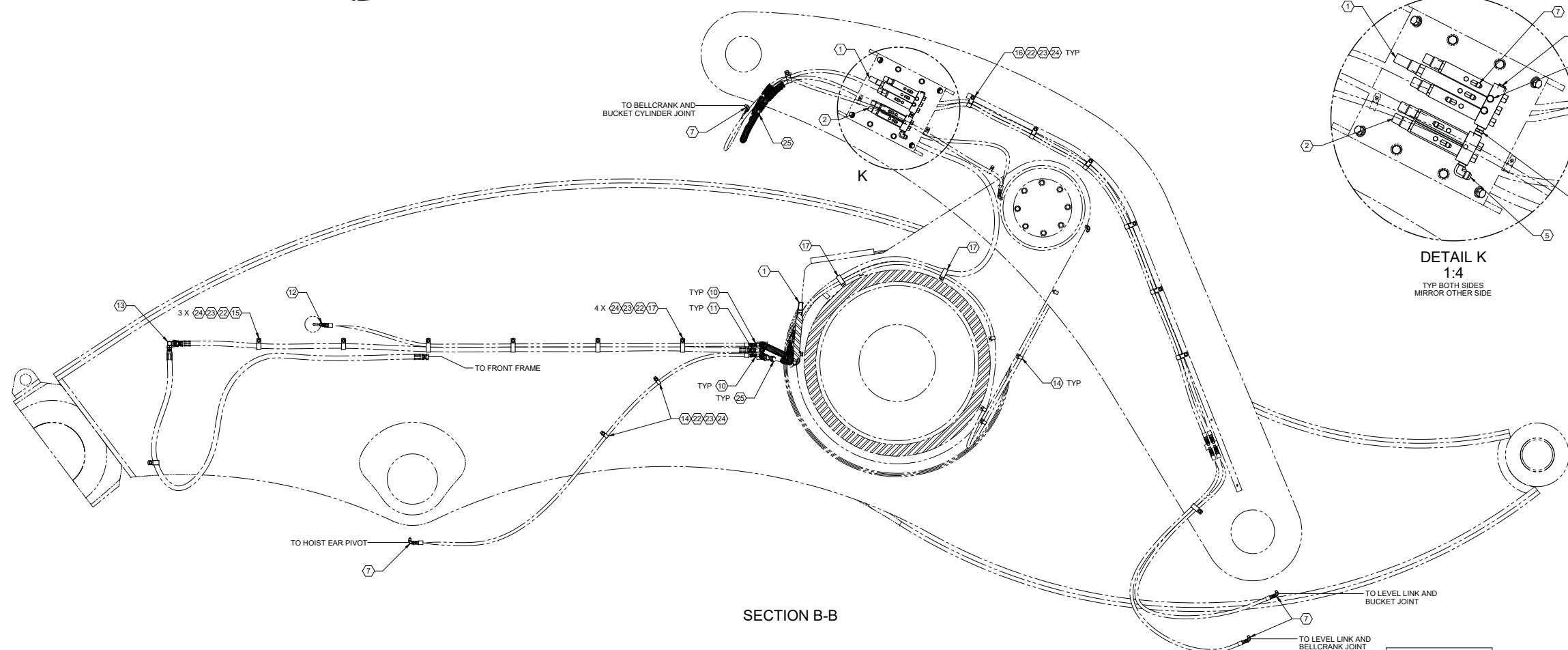
2

1

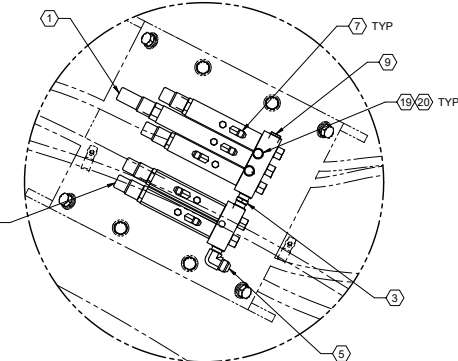
ZONE		REVISIONS			EN	DATE	CHK	CHK	APP
00	RELEASE				NL11-1959	10-29	RAH	WLD	WLD



SECTION A-A



SECTION B-B



DETAIL K  
1:4  
TYP BOTH SIDES  
MIRROR OTHER SIDE

8

7

6

5

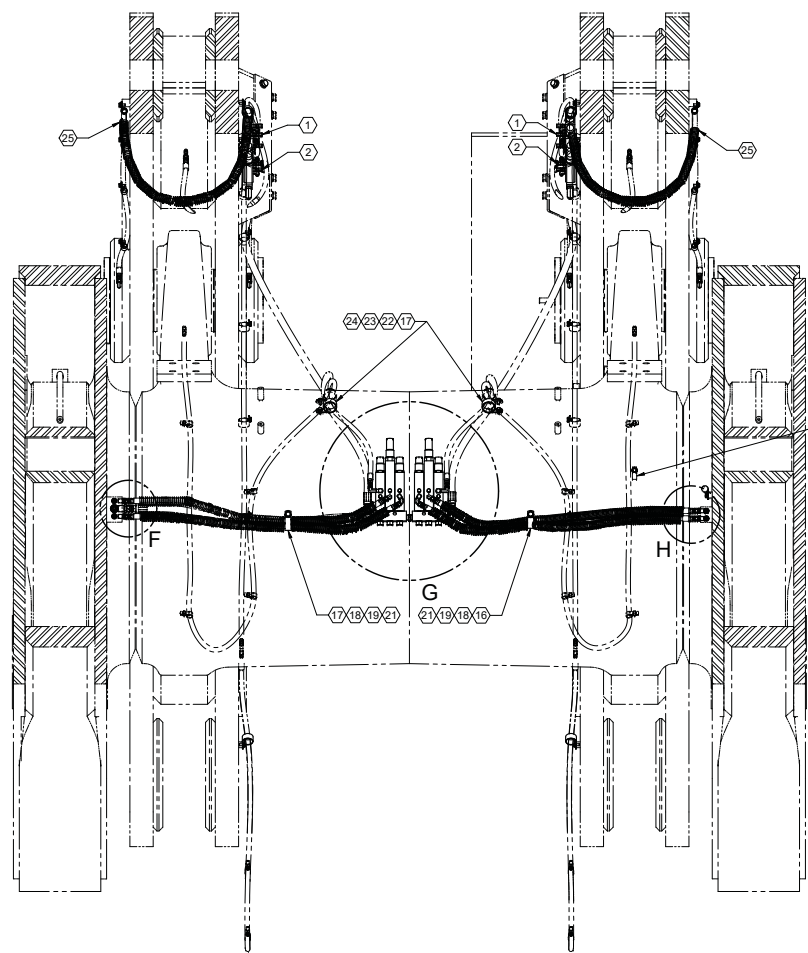
4

3

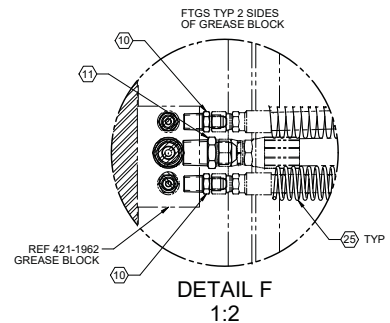
2

1

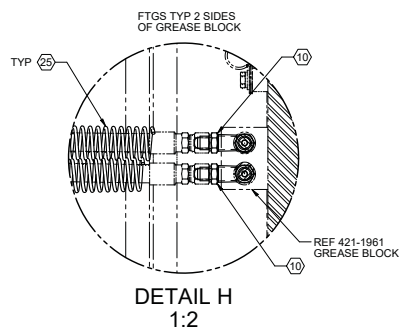
ZONE		REV	DESCRIPTION	EN	DATE	CHK	CHK	APP
00		RELEASE		NL11-1959	10-29	RAH	WLD	WLD



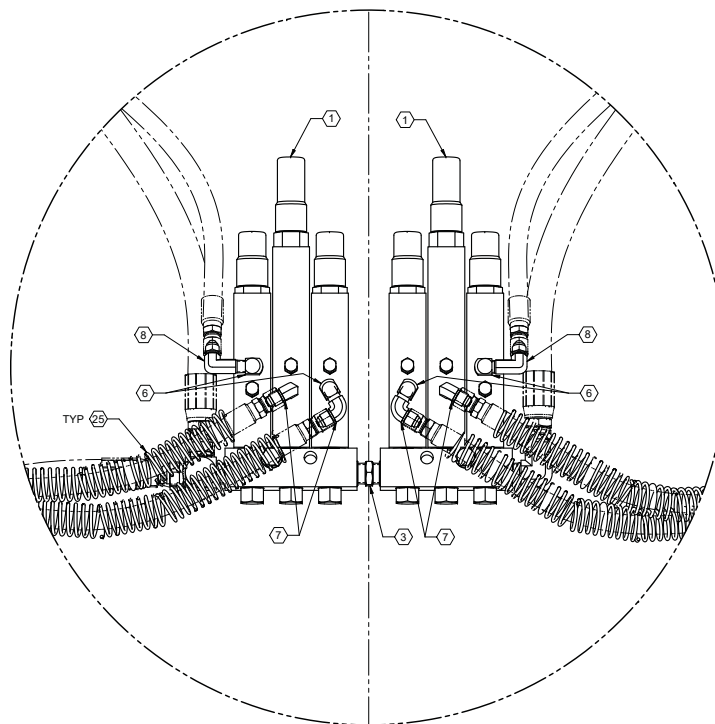
SECTION C-C



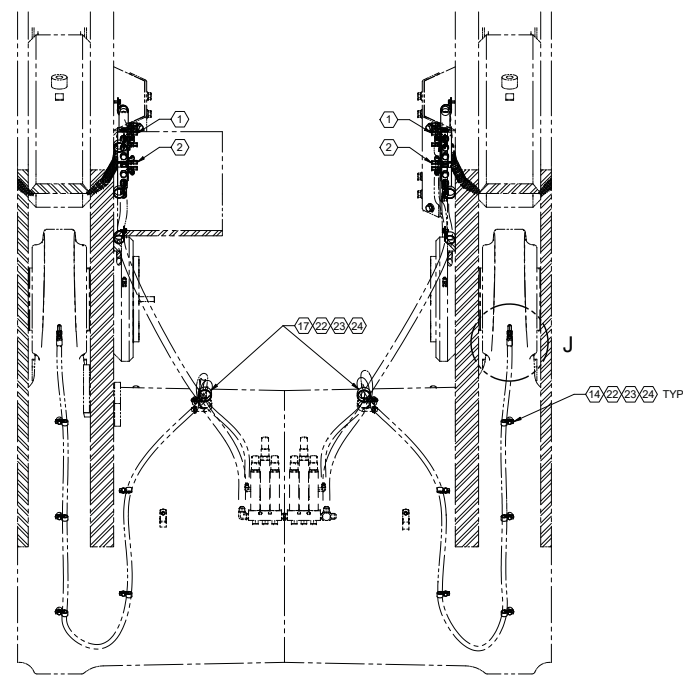
DETAIL F  
1:2



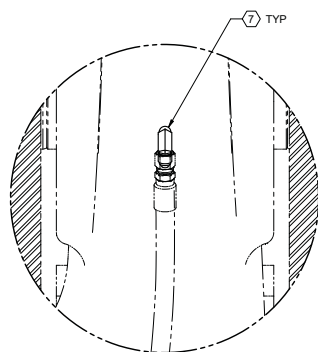
DETAIL H  
1:2



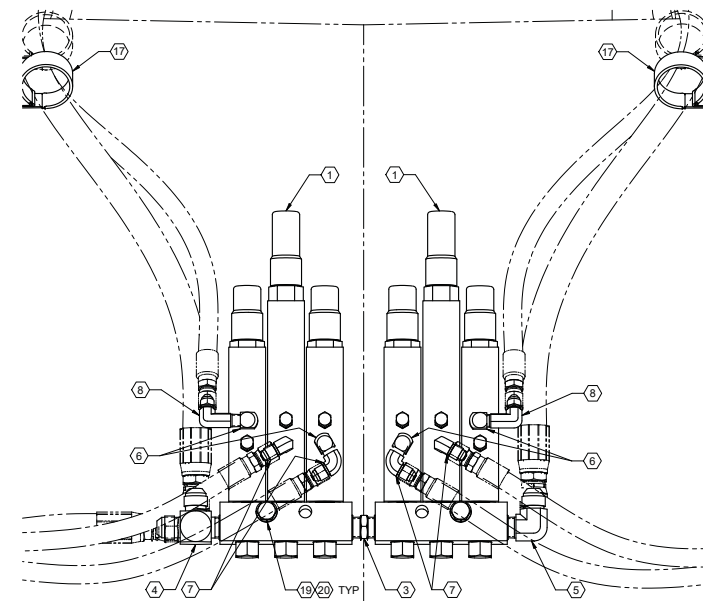
DETAIL G  
1:2



SECTION D-D



DETAIL J  
1:2



VIEW K-K  
1:2

ITEM 25 NOT SHOWN FOR CLARITY



# **Liftarm Auto Lube Hose Group**



8

7

6

5

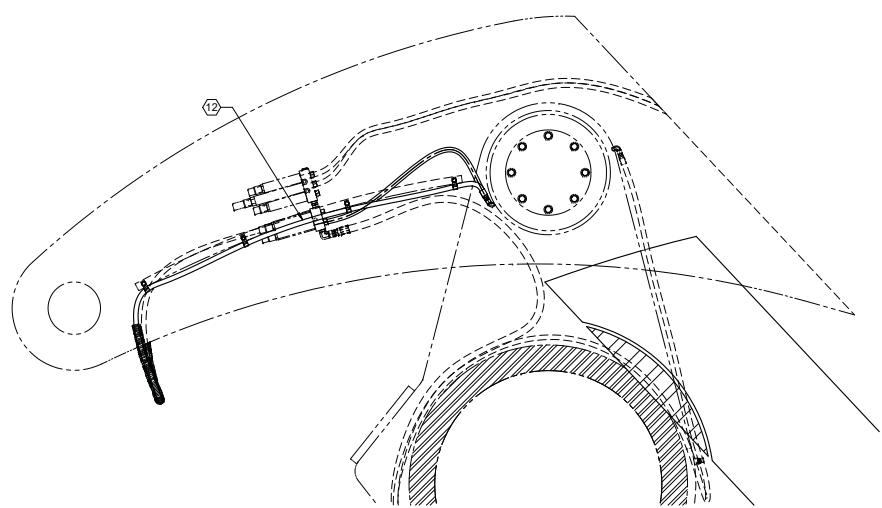
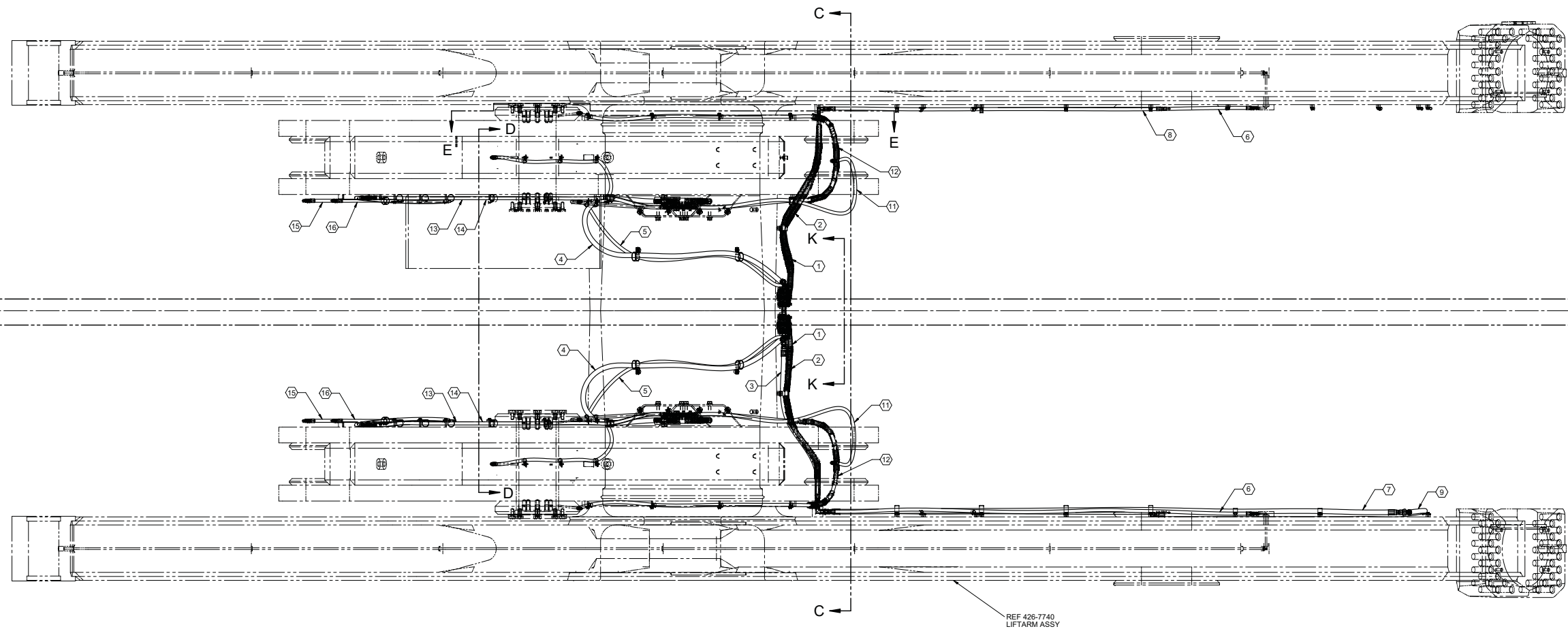
4

3

2

1

REV		DESCRIPTION	EN	DATE	CHK	APP
00	RELEASE		NL11-1959	10-29	RAH	WLD



SECTION E-E  
TYP BOTH SIDES

REF 427-4749 GP HDW AUTOLUBE LA L18G2 HL FOR INJECTOR AND HARDWARE INSTALLATION  
REF 427-0840 REF AUTO LUBE L18502201&UP FOR SCHEMATIC

ITEM	PART NO.	QTY	DESCRIPTION
16	4122857	2	HOSE 5000 4 54.0 OJ OJ
15	4122870	2	HOSE 5000 4 60.0 OJ OJ
14	4223118	2	HOSE 5000 4 84.0 OJ OJ
13	4150738	2	HOSE 5000 4 83.0 OJ OJ
12	4148824	2	HOSE 5000 4 100.0 OJ OJ
11	6971718	2	HOSE 5000 4 58.0 OJ OJ
10	4130284	2	HOSE 5000 4 29.0 OJ OJ
9	4129036	1	HOSE 4250 8 84.0 OJ OJ
8	6983192	2	HOSE 5000 4 90.0 OJ OJ
7	4261662	1	HOSE 4250 8 109.0 OJ OJ
6	4148823	2	HOSE 5000 4 84.0 OJ OJ
5	4213531	2	HOSE 5000 4 136.0 OJ OJ
4	4129045	2	HOSE 4250 8 102.0 OJ OJ
3	4122863	1	HOSE 4250 8 33.0 OJ OJ
2	4243746	2	HOSE 5000 4 40.0 OJ OJ
1	4186021	2	HOSE 5000 4 37.0 OJ OJ

THIS DRAWING AND ALL DATA THEREIN IS THE PROPERTY OF LETOURNEAU TECHNOLOGIES. IT IS CONFIDENTIAL AND MUST NOT BE COPIED, IT IS LOANED SUBJECT TO RETURN UPON DEMAND AND IS NOT TO BE USED IN ANY WAY DETRIMENTAL TO OUR INTEREST.

UNLESS OTHERWISE SPECIFIED:  
DIMENSIONS ARE IN INCHES & APPLY BEFORE PLATING OR FINISH COATINGS.  
TOLERANCES ON:  
FRACTIONS: ±.016  
ANGLES: ±1°  
DECIMAL: ±.03  
XXX DECIMAL: ±.015  
MACHINED CORNERS: .064 X .45  
WELD PROPERTIES SHALL MEET THE MINIMUM REQUIREMENTS OF THE BASE MATERIAL.

THIRD ANGLE PROJECTION

FIRST USED ON CONTRACT NO. 426-7757

DWN rhyatt 10-29-11  
CHK WLD 10-29-11  
ENGR WLD 10-29-11  
PROD ENGR  
PROJ APPROVAL  
MATL

LeTourneau Technologies™

GP HOSES AUTOLUBE LA L18G2 HL

DO NOT SCALE 4274748 00

SCALE 1/8 (SEE DET 199.3 Ibm) SHEET 1 OF 3

8

7

6

5

4

3

2

1

8

7

6

5

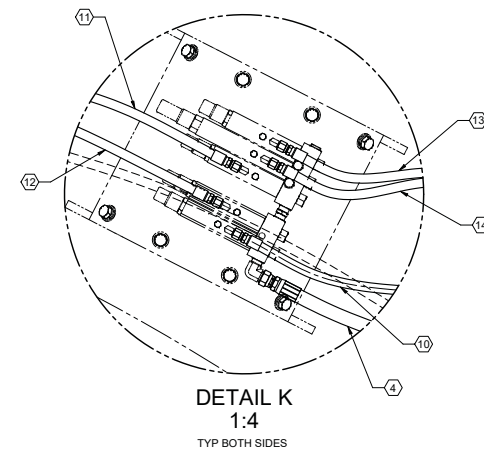
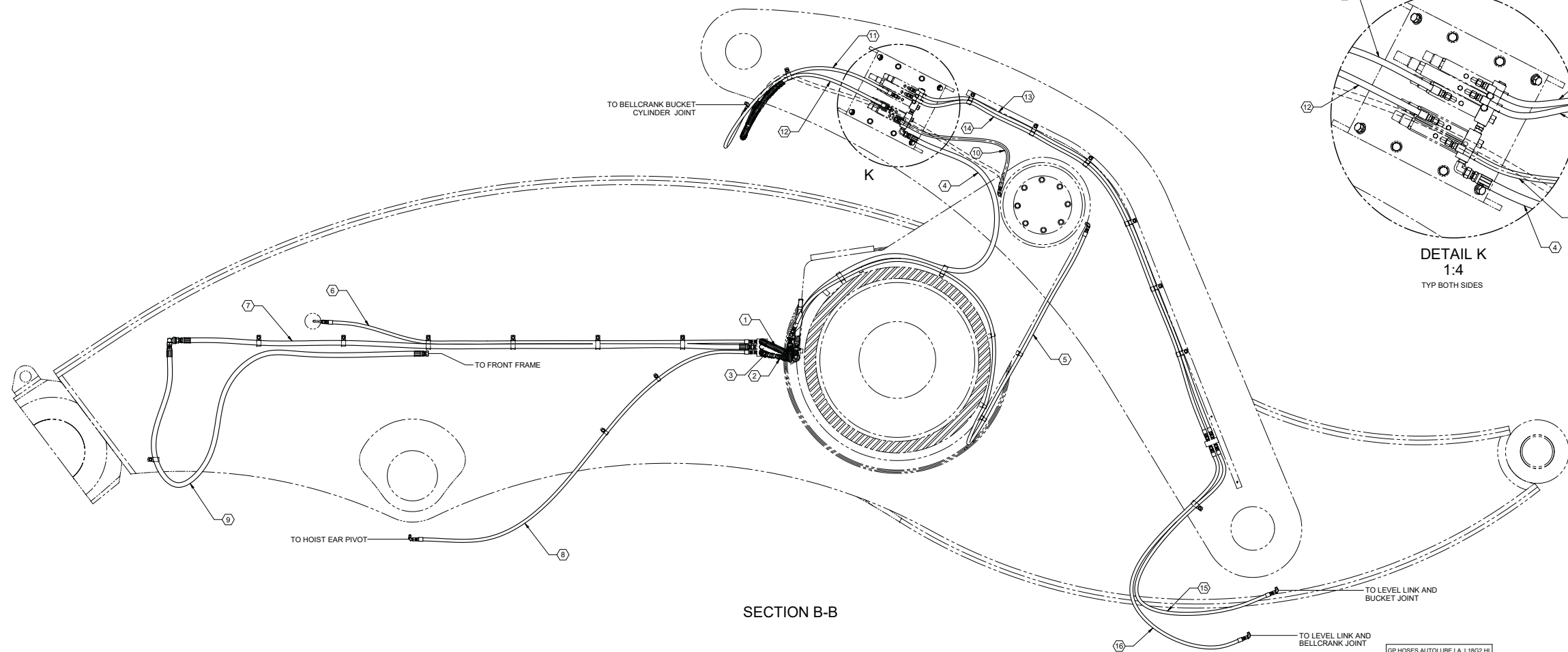
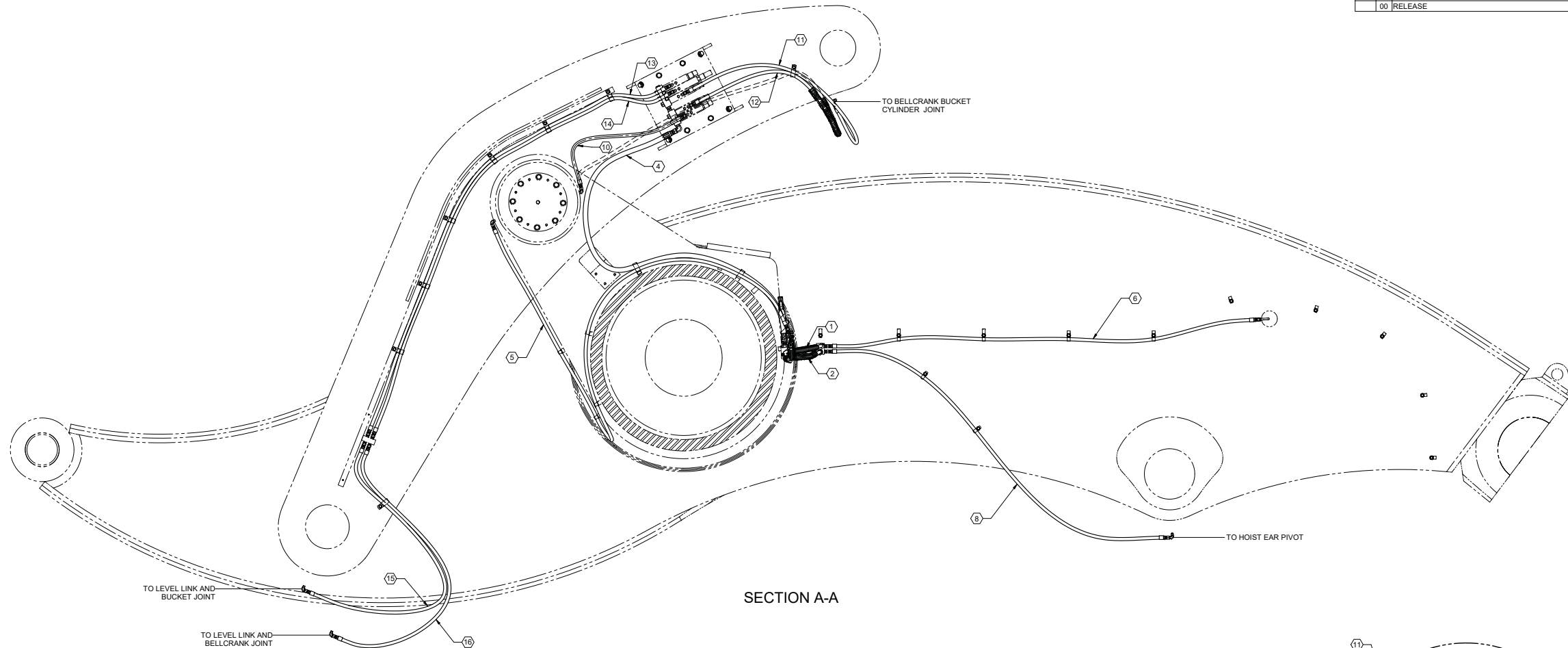
4

3

2

1

ZONE		REV	DESCRIPTION	ENR	DATE	CHK	CHK	APP
00		RELEASE		NL11-1959	10-29	RAH	WLD	WLD



GP HOSES AUTOLUBE LA L1802 HL	SCALE	1/8	REV	1	DATE	10-29-11	DESIGN	17798	ISSUE	00
<b>E</b> DO NOT SCALE		4274748		2 OF 3						

8

7

6

5

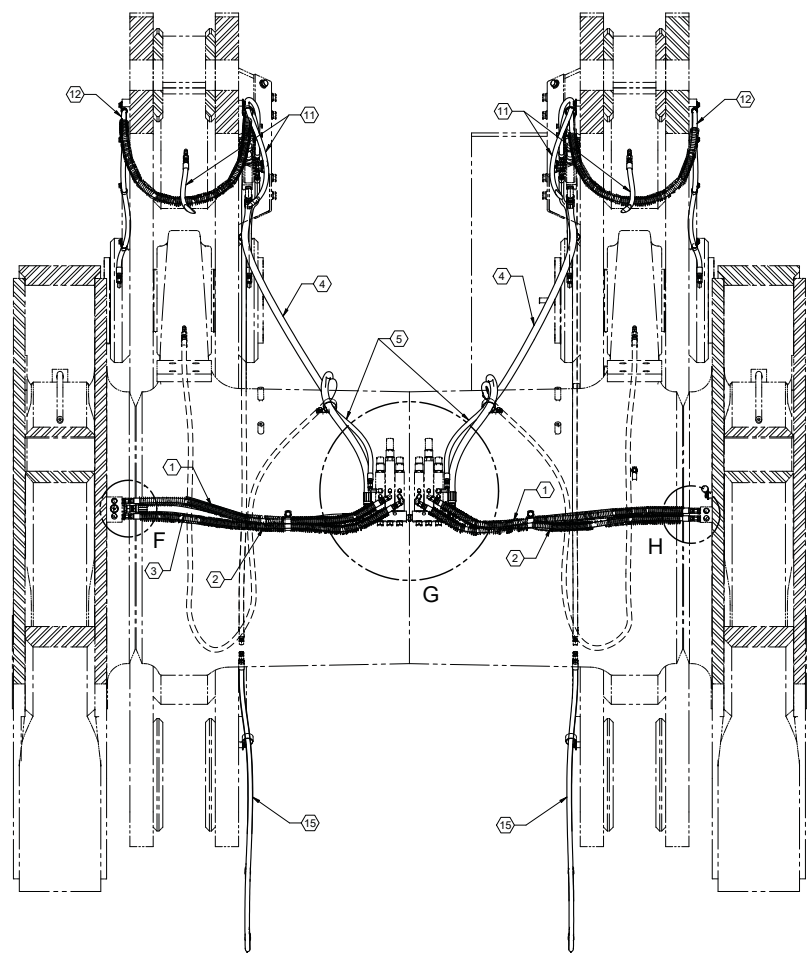
4

3

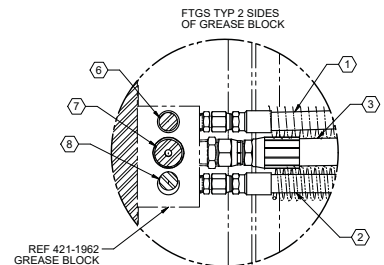
2

1

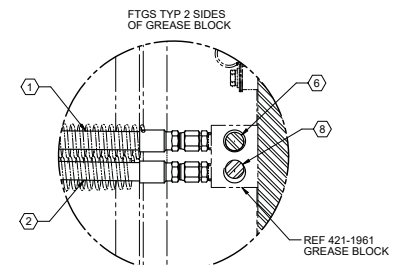
ZONE		REV	DESCRIPTION	EN	DATE	CHK	CHK	APP
00		RELEASE		NL11-1959	10-29	RAH	WLD	WLD



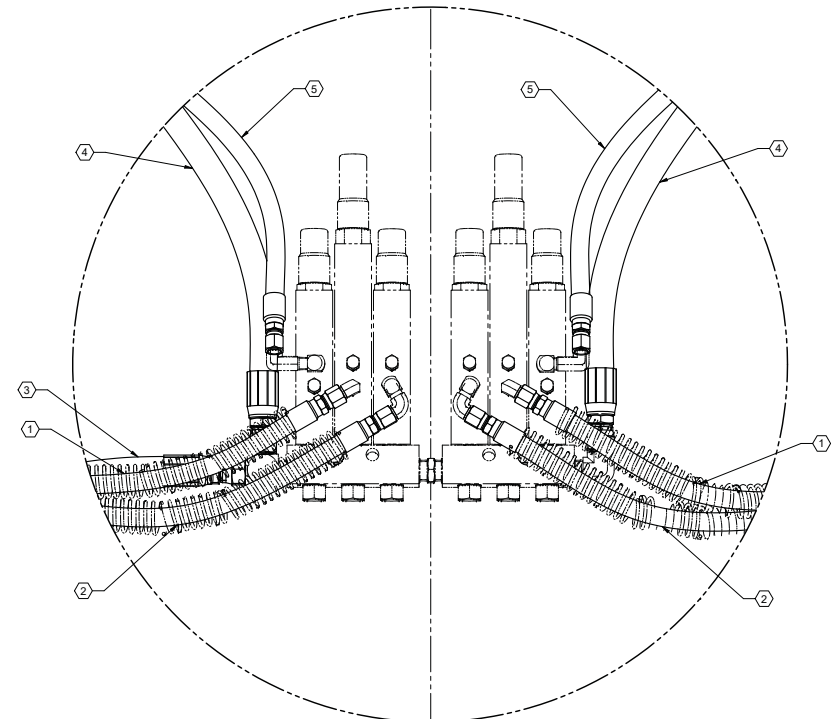
SECTION C-C



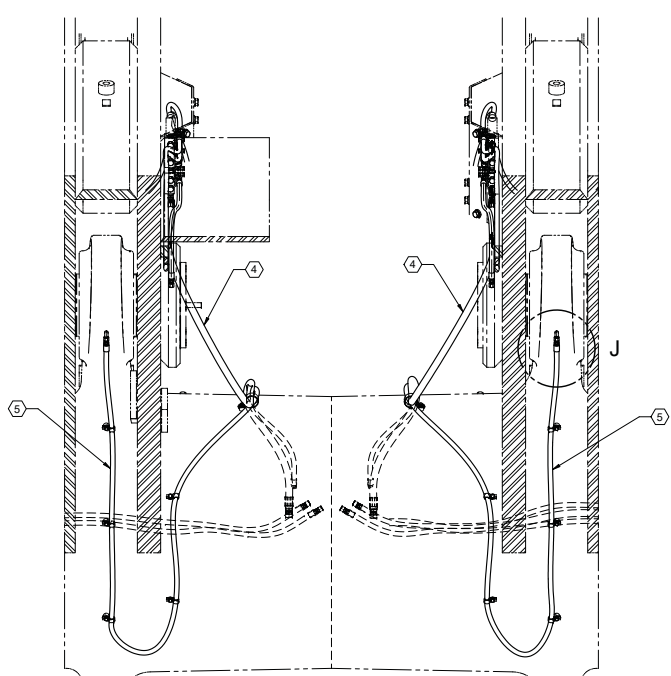
DETAIL F  
1:2



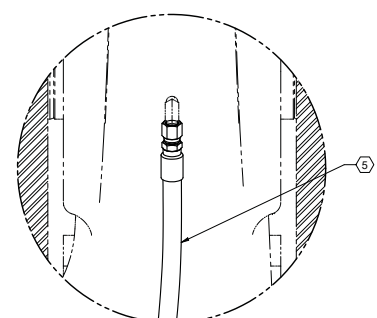
DETAIL H  
1:2



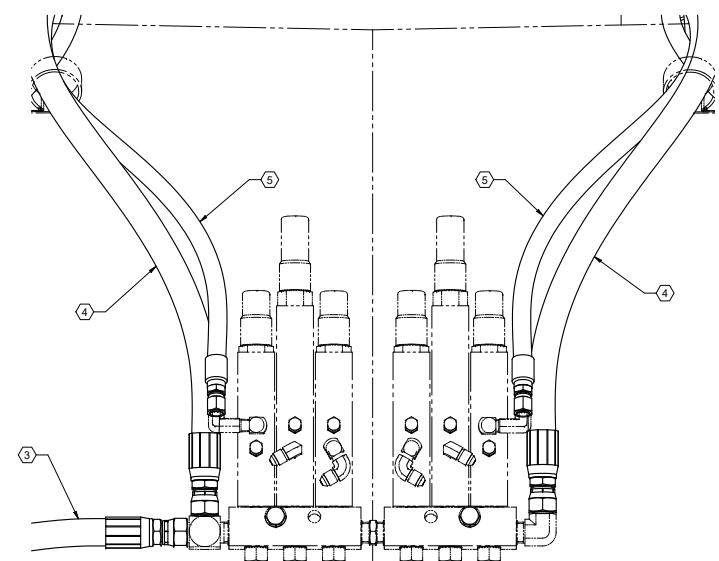
DETAIL G  
1:2



SECTION D-D



DETAIL J  
1:2



VIEW K-K  
1:2  
ITEMS 1 & 2 NOT SHOWN  
FOR CLARITY

GP HOSES AUTOLUBE LA L 1962 HL		REV	00
SCALE	1/8	WEIGHT	199.3 lbm
DATE	10-29-11	REV	00
E DO NOT SCALE		4274748	3 OF 3

8

7

6

5

4

3

2

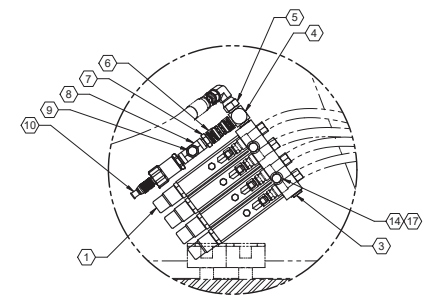
1



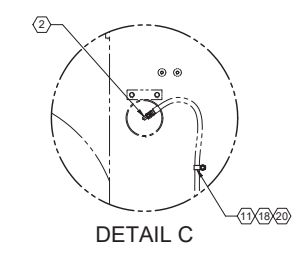
**Rear Frame**  
**Auto Lube Hardware Group**



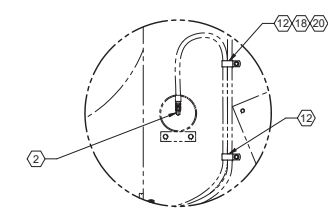
REV		DESCRIPTION	EN	DATE	CHK	CHK	APP
00	RELEASE		NL11-1964	11-14	RAH	WLD	WLD
01	UPDT GRAPHICS FOR REF 416-9642 HOSE		NL12-0056	9-04	RAH	WLD	WLD
02	DEL IT21 PER AR HOSE WRAP ADDITION; IT14(8) WAS 4; DEL						
02	IT15;19; IT14 WAS IT15 @ IT1		1380000	2-20-19	RAH	EER	JBD



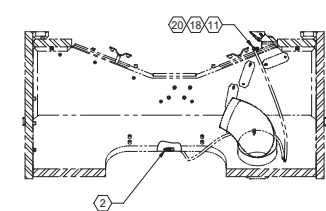
DETAIL B  
1:4



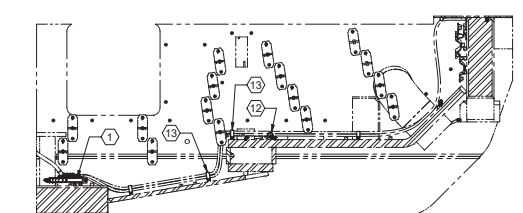
DETAIL C



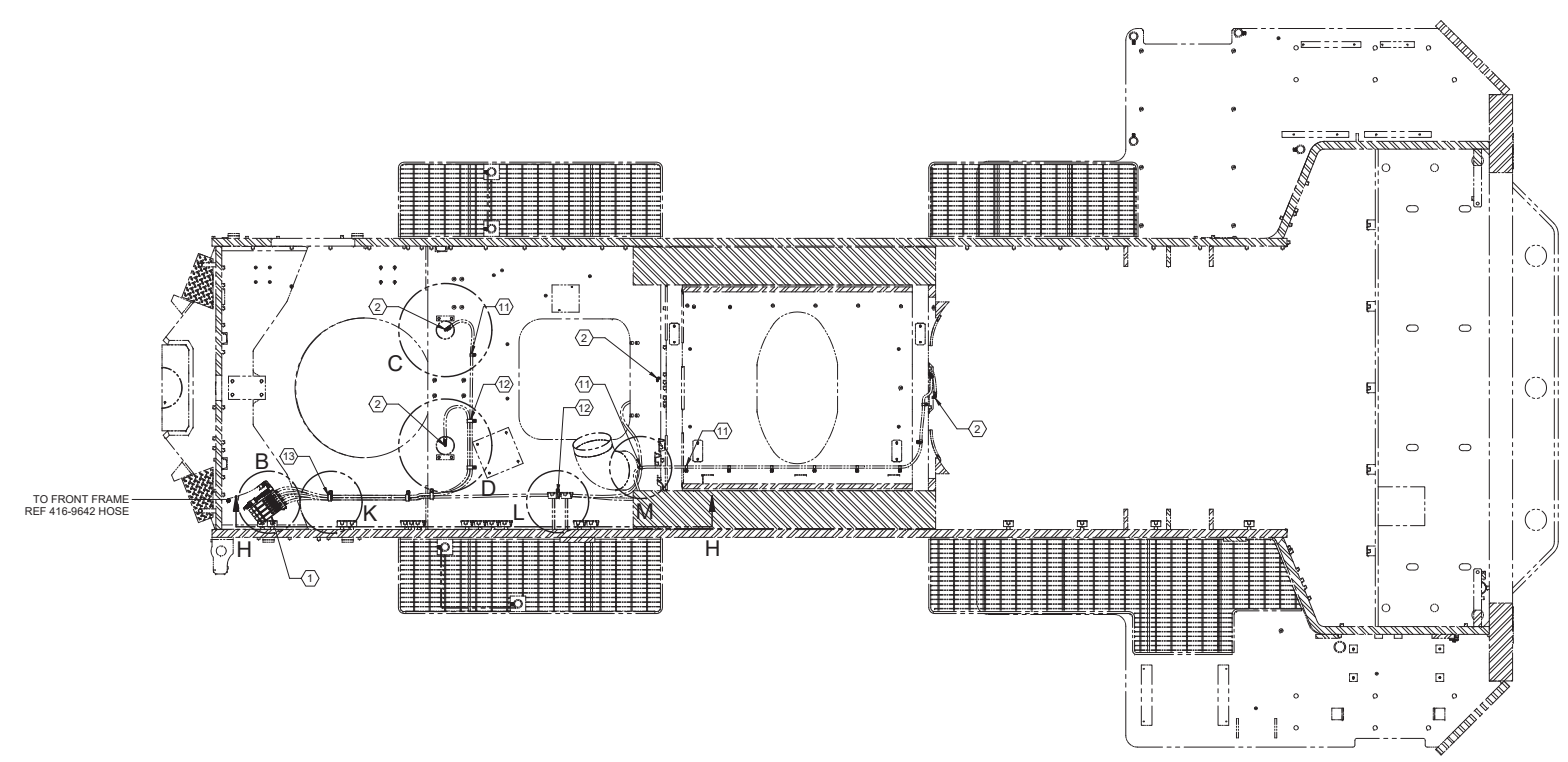
DETAIL D



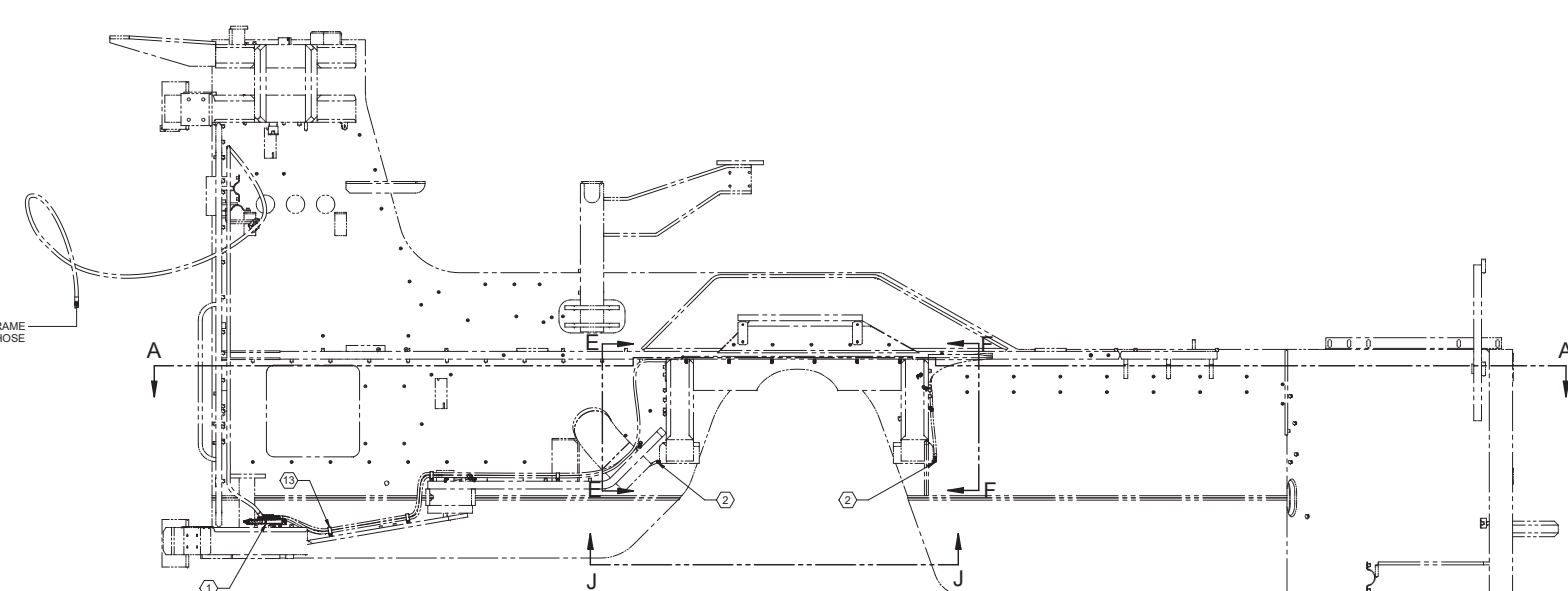
SECTION E-E



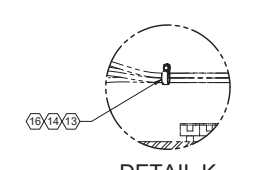
SECTION H-H



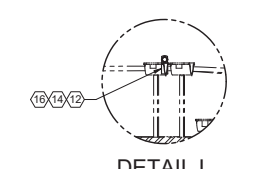
SECTION A-A



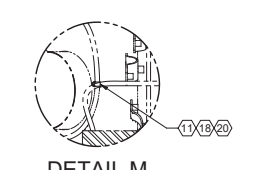
SECTION J-J



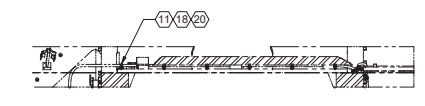
DETAIL K



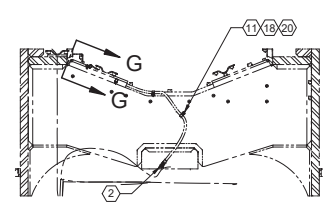
DETAIL L



DETAIL M



SECTION G-G



SECTION F-F

ITEM	PART NO.	QTY	DESCRIPTION
20	0812278	13	BOLT HEX 250 63 NC G8 FT
18	4010923	13	WASHER FLAT 250 63 .065
17	4009641	2	BOLT HX 375 2.000 NC G8
16	0788159	4	BOLT HX 375 625 NC G8 FT
14	0808221	8	WASHER FLAT 375 81 .08
13	0986145	3	CLAMP CABLE INSL 1.50 406
12	0986144	3	CLAMP CABLE INSL 1.25 406
11	4086112	11	CLAMP CABLE INSL .63 40
10	4255496	1	KIT TRANSMITTER 5000 PSIG
9	4013779	1	PIPE PLG 250 OH HX
8	4031446	1	FTG HYD TE 4FP 4FP 4FP
7	4021571	1	FTG HYD 0 8 MJ 4 MP JUMP
6	4244980	1	FTG HYD 0 8 FJ 8 FJ SWV
5	4002479	1	HYD FITTING 90-DEG 8 MJ 8 FJ
4	4038895	1	FTH HYD TE 8 MJ 6 MP 8 MJ
3	0088402	1	PIPE PLG .375 CS HX
2	0979138	8	FTG HYD 90 4 MJ 2 MP
1	4271149	1	4 UNIT INJECTOR SLV

REF 427-4758 GP HOSE AUTOLUBE RF L2350 G2 FOR HOSE INSTALLATION

REF 426-7535 REF AUTO LUBE L23502201 & UP FOR SCHEMATIC

FIRST USED ON CONTRACT NO. 427-2708

UNLESS OTHERWISE SPECIFIED:  
 DIMENSIONS ARE IN INCHES & APPLY BEFORE PLATING OR FINISH COATINGS.  
 TOLERANCES ON:  
 ANGLES ±1°  
 FRACTIONS ±0.10  
 XX DECIMAL ±0.03  
 XXX DECIMAL ±0.015  
 MACHINED CORNERS: R54 X .45  
 WELD PROPERTIES SHALL MEET THE MINIMUM REQUIREMENTS OF THE BASE MATERIAL.  
 THIRD ANGLE PROJECTION

LeTourneau Technologies™  
 DWG: rhyatt 11-14-11  
 CHK: WLD 11-14-11  
 ENGR: WLD 11-14-11  
 PROJ ENGR:  
 PROJ APPROVAL:  
 MATL:

GP HDW AUTOLUBE RF L2350 G2

DO NOT SCALE  
 4274759  
 02

INTERPRET DIM & TOL PER LETOURNEAU SPEC 1000.00

SCALE: 1/8" = 1" (SEE DET 14.4 FOR)

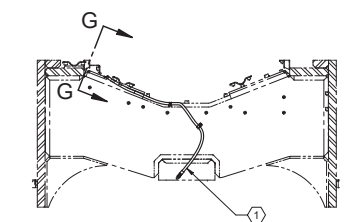
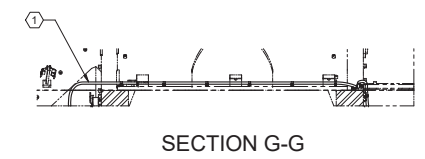
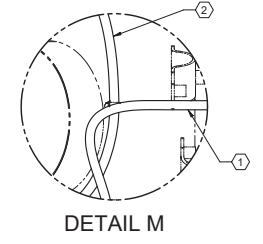
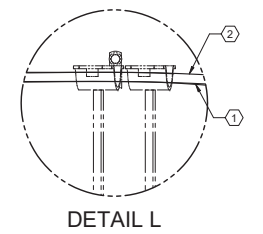
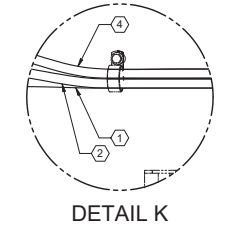
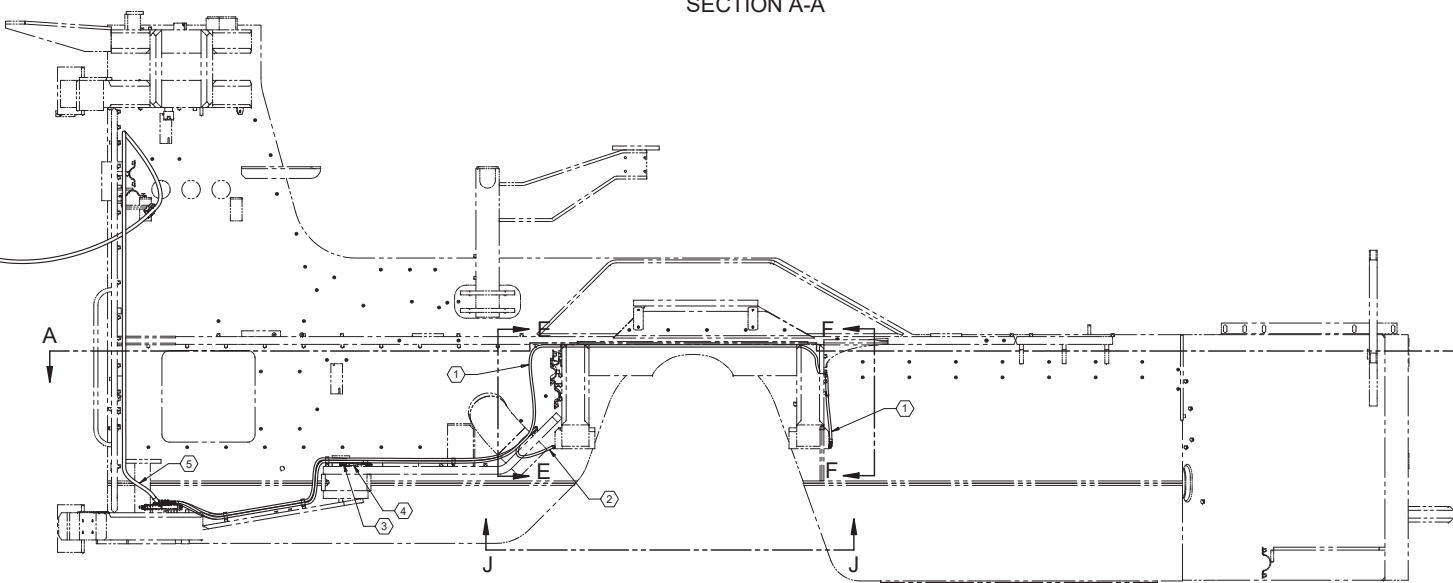
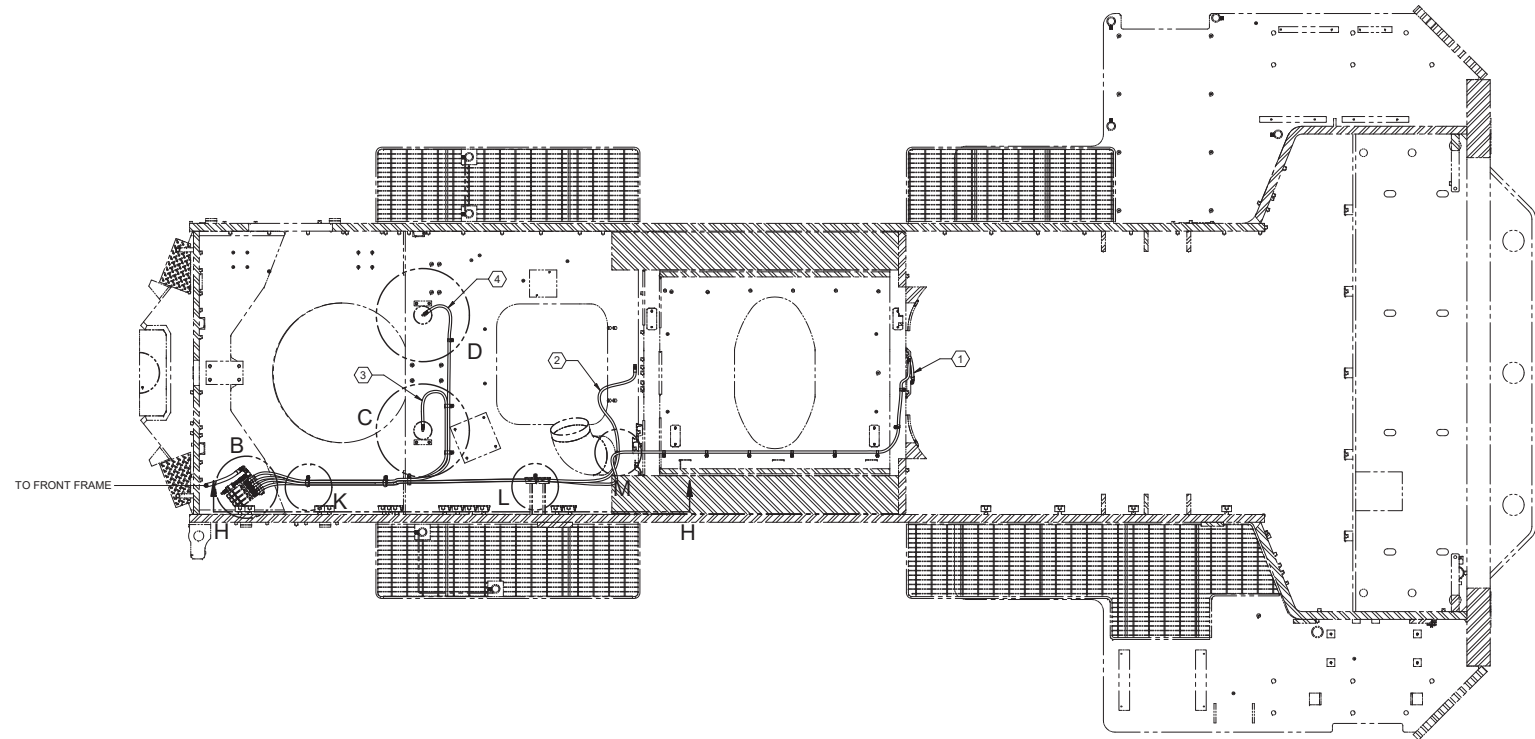
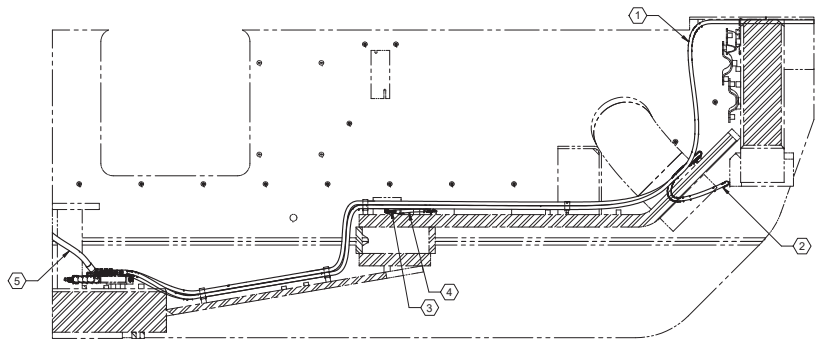
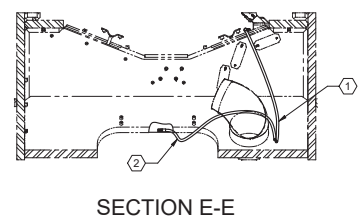
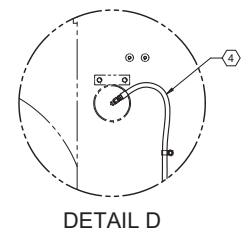
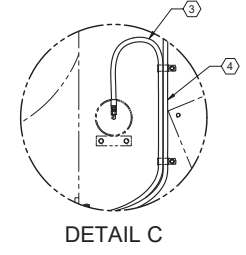
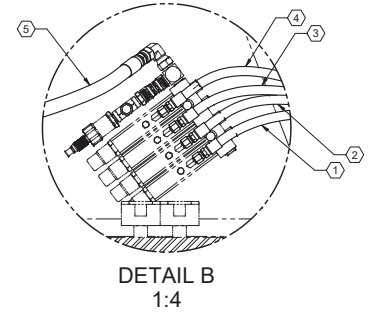
SHEET 1 OF 1



**Rear Frame  
Auto Lube Hose Group**



REV		DESCRIPTION	EN	DATE	CHK	CHK	APP
00	RELEASE		NL11-1964	11-14	RAH	WLD	WLD
01	ADD IT 5(416-9642)		NL12-0056	9-04	RAH	WLD	WLD
02	ADD AR WRAP TO ALL HOSES		1380000	2-20-19	RAH	EER	JBD



REF 427-4759 GP HDW AUTOLUBE RF L2350 G2 FOR INJECTOR AND HARDWARE INSTALLATION  
REF 426-7535 REF AUTO LUBE L23502201 & UP FOR SCHEMATIC

THIS DRAWING AND ALL DATA THEREIN IS THE PROPERTY OF LETOURNEAU TECHNOLOGIES. IT IS CONFIDENTIAL AND MUST NOT BE COPIED, IT IS LOANED SUBJECT TO RETURN UPON DEMAND AND IS NOT TO BE USED IN ANY WAY DETRIMENTAL TO OUR INTEREST.  
INTERPRET DIM & TOL PER LETOURNEAU SPEC 1000.00

UNLESS OTHERWISE SPECIFIED:  
DIMENSIONS ARE IN INCHES & APPLY BEFORE PLATING OR FINISH COATINGS.  
TOLERANCES ON:  
FRACTIONS: ±.010  
ANGLES: ±1°  
DECIMALS: ±.005  
XXX DECIMAL: ±.015  
MACHINED CORNERS: R54 X .45  
WELD PROPERTIES SHALL MEET THE MINIMUM REQUIREMENTS OF THE BASE MATERIAL.  
THIRD ANGLE PROJECTION

FIRST USED ON CONTRACT NO. 427-2708  
DWG: rhyatt  
CHK: WLD  
ENGR: WLD  
PROJ ENGR: WLD  
PROJ APPROVAL: JBD  
MATL:

ITEM	PART NO.	QTY	DESCRIPTION
5	4298044	1	HOSE 4000 8 295.0 OJ OJ AR
4	4296446	1	HOSE 4000 4 120.0 OJ OJ AR
3	4298040	1	HOSE 4000 4 90.0 OJ OJ AR
2	4296443	1	HOSE 4000 4 154.0 OJ OJ AR
1	4296433	1	HOSE 4000 4 252.0 OJ OJ AR

LeTourneau Technologies™  
GP HOSES AUTOLUBE RF L2350 G2  
DO NOT SCALE  
4274758  
1 OF 1

